

## 1 PC Connector (351 Series)

## FC UPC PREMIUM



CONNECTOR	FERRULE TYPE	BOOT TYPE	BOOT COLOR
351 Premium	103 SM: Premium 125µm	7 Long 3.0mm	1 Blue
	109 SM: Low Loss 125µm	A Long 2.0mm	2 Black
	201 MM: Premium 127µm	M Standard 900µm	3 Green
		N Standard 2.0mm	4 Red
		P Standard 3.0mm	6 Yellow
		J MINI 900µm	7 White
		K MINI 2.0mm	8 Beige
		L MINI 3.0mm	9 Aqua
		F Flex Angle Boot 3.0mm	

351 - 103 - L6 ORDER CODE example

**Note:** Other ferrule ID size are available  
SM 81µm SM 126µm SM 125.5µm MM 230µm MM 144µm

### Features:

- SENKO's flagship highest quality Premium Connector Series
- Designed to exceed the requirement of Verizon FOC TPR 9409 requirement
- Premium Low Loss SM, typical IL against Master 0.05dB
- Premium Low Loss to meet IEC 61753-1 Grade A random mating requirement of Max 0.15dB
- Premium SM typical IL against Master 0.08dB
- Premium SM to meet IEC 61753-1 Grade B random mating requirement of Max 0.25dB
- 4 directions tuning ferrule to improve random mating IL
- Crimp tool to be used CRT-401
- Narrow key width 2.00mm+/-0.02mm

## 1 PC Connector (292/293 Series)

## FC APC PREMIUM



CONNECTOR	FERRULE TYPE	FERRULE POLISH	BOOT TYPE
292 Premium Step	203 SM: Premium 125µm	1 No Angle	7 Long 3.0mm
293 Premium Cone	209 SM: Low Loss 125µm	2 8° Pre-Angle	A Long 2.0mm
			M Standard 900µm
			N Standard 2.0mm
			P Standard 3.0mm
			J MINI 900µm
			K MINI 2.0mm
			L MINI 3.0mm
			F Flex Angle Boot 3.0mm

293 - 203 - 2A ORDER CODE example

**Note:** Other ferrule ID size are available  
SM 81µm SM 126µm SM 125.5µm

### Features:

- SENKO's flagship highest quality Premium Connector Series
- Designed to exceed the requirement of Verizon FOC TPR 9409 requirement
- Premium Low Loss SM, typical IL against Master 0.07dB
- Premium SM typical IL against Master 0.08dB
- Cone ferrule type and Step ferrule type available
- Option of an 8 degree pre-angle cut available
- Various choices of boots types
- Crimp tool to be used CRT-401
- Narrow key width 2.00mm+/-0.02mm



## FC STANDARD

### 1 PC Connector (341/331 Series)

CONNECTOR	FERRULE TYPE	BOOT TYPE	BOOT COLOR
341 Preassembled 1pc	101 SM: 125.5µm	P Standard 3.0mm	1 Blue
331 Unassembled Key Ring	201 MM: 127µm	N Standard 2.0mm	2 Black
332 Unassembled Inner Key		M Standard 900µm	4 Red
		J MINI 900µm	6 Yellow
			8 Beige

341 - 101 - J1 ORDER CODE example

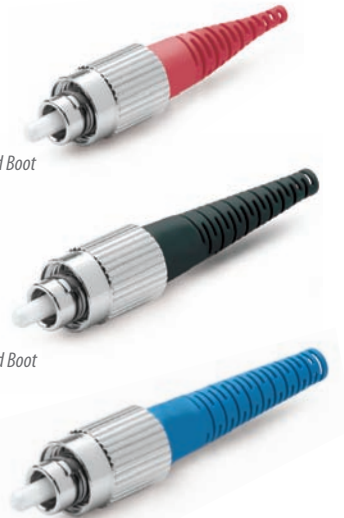
#### Features:

- SENKO's Standard Connector series gives the highest value for cost
- Pre-assembled one piece design and Connector Kit available
- Meets and exceeds the TIA/EIA, IEC and JIS SC Specification
- Typical IL against master to be 0.12dB Max 0.3dB
- Various boot color to meet customer need
- Crimp tool to be used CRT-401
- Narrow key width 2.00mm+/-0.02mm

900µm Standard Boot

2.0mm Standard Boot

3.0mm Standard Boot

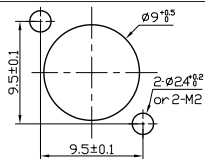


## FC ADAPTER

### Square (297) and Oval (298)

ADAPTER TYPE	SLEEVE	KEY WIDTH
297 Solid Body	1 Zirconia Straight Split	01 For PC Connector 2.15 +0.05/-0
298 FC Oval Adapter "HD"	2 Metal Straight Split	02 For APC Connector 2.05+/-0.02

297 - 101 ORDER CODE example



Mounting Hole Dimensions

FC Square, Standard Body and Oval Adapter, HD Style

#### Features:

- FC Square, High Density Oval and Round type available
- UPC type Adapter have Wide key of 2.15mm
- APC type Adapter have Narrow key of 2.05mm
- Typical insertion loss under 0.05dB and Max IL of 0.20dB
- High quality and durable Ni-Plated Brass body

FC Square Adapter, Solid Body

FC Oval Adapter, HD Style

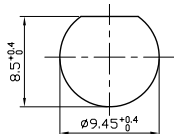


## FC ROUND ADAPTER

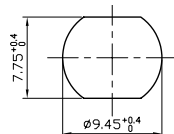
### Round (253 type)

CODE	SLEEVE	KEY WIDTH	FLANGE
253 FC Round Adapter "D" & "DD"	1 Zirconia Straight Split	0 For PC Connector 2.15 +0.05/-0	3 D: Ø8.85mm x 7.95mm
	2 Metal Straight Split	2 For APC Connector 2.05 +/- 0.02	4 DD: Ø9.35mm x 7.65mm

253 - 103 ORDER CODE example



FC Round Adapter D Style



FC Round Adapter DD Style

Mounting Hole Dimensions

FC Round Adapter, D Style

