

## MU ADAPTER

### MU Adapter

CODE	TYPE	SLEEVE
MUA	1 Simplex	ZA Zirconia
	2 Duplex	
	3 8-Port	

MUA - 1 - ZA ORDER CODE example

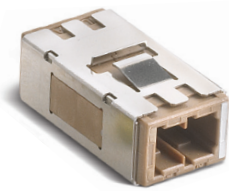
**Features:**

- Compact design
- NTT-MU hardware compatibility
- NTT & JIS compliance
- High precision alignment
- Low insertion and return loss and back reflection\*
- Corrosion resistance reflection

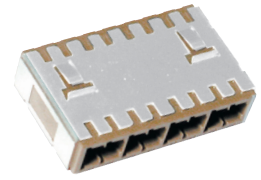
Simplex



Duplex



8-Port



## MU BACKBOARD AND PACKAGE HOUSING

### MU Back Board

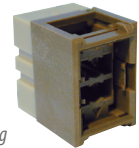
CODE	TYPE	HOUSING TYPE
MUB	2 Duplex	1 2.4mm Back Board Thickness
	8 8-Port	2 3.2mm Back Board Thickness
		3 Package Housing

MUB - 2 - 1 ORDER CODE example

**Features:**

- Compact design
- NTT-MU hardware compatibility
- NTT & JIS compliance
- High precision alignment
- Low insertion and return loss and back reflection\*
- Corrosion resistance reflection

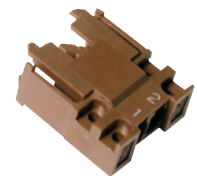
Duplex Backboard Housing



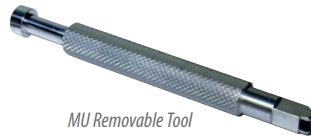
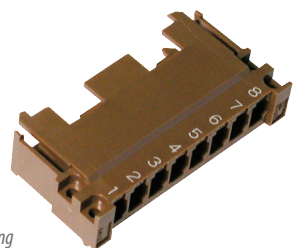
8-ports Backboard Housing



Duplex Package Housing



8-port Package Housing



CODE	TYPE
MUB Sleeve Holder	MU-SH

MUB - MU-SH ORDER CODE example

CODE	TYPE
MUB Removable Tool	MU-JRT

MUB - MU-JRT ORDER CODE example